

GPIO List

Neptune pins		Ying GPIO Signal name and usage		
GPIO Name	Ball	Signal name	Usage	Mode setting
gpio_0	M15	CAM_VS	CAM_VS	mode0
gpio_1	W21	CAM_RST	CAM_RST	mode0
gpio_2	J15	RAC_VSRM	RAC_VSRM	mode0
gpio_3	B8	CAM_HS	CAM_HS	mode0
gpio_4	C3	NC	NC	mode0
gpio_5	U19	ADC_STROBE	ADC_STROBE	mode0
gpio_6	A7	CAM_VS	CAM_VS	mode0
gpio_7	T18	NC	NC	mode0
gpio_8	R18	FM_INT	FM INT	mode3
gpio_9	V20	FM_RST	FM Reset	mode0
gpio_10	K14	HP_AMP_EN	HPF Amp enable	mode1
gpio_11	W17	NC	NC	mode0
gpio_12	V16	RST_BT	BT Reset	mode0
gpio_13	Y18	LCD_WRST	LCD_WRST	mode0
gpio_14	R9	F_A17	F_A17	mode0
gpio_15	A14	TXD_ACB	TXD_ACB	mode0
gpio_16	C9	CAM_STBY	Camera standby	mode0
gpio_17	Y18	IT-HOOK	IT-HOOK	mode0
gpio_18	Y17	USB_0_TXEN	USB_0_TXEN	mode0
gpio_19	V15	USB_0_SE0	USB_0_SE0	mode0
gpio_20	V17	CAM_AVDD_EN	Camera LDO Enable	mode0
gpio_21	H10	HPF_POWER_EN	HPF Amp LDO enable	mode0
gpio_22	V19	LCD_RS	LCD_RS	mode0
gpio_23	AA12	SPD18	Reserved for RF(Skyworks)	mode1
gpio_24	V10	F_A22	F_A22	mode0
gpio_25	C10	CAM_D4	CAM_D4	mode0
gpio_26	AA10	F_A23	F_A23	mode0
gpio_27	D10	CAM_D5	CAM_D5	mode0
gpio_28	W10	F_A34	F_A34	mode0
gpio_29	C11	CAM_D6	CAM_D6	mode0
gpio_30	P10	F_A25	F_A25	mode0
gpio_31	D11	CAM_D7	CAM_D7	mode0
gpio_32	E19	LCD_D2	LCD_D2	mode0
gpio_33	W11	F_RDY	F_RDY	mode0
gpio_34	D17	SPI_CS_BT	SPI_CS_BT	mode3
gpio_35	Y18	SPI_MOSI_BT	SPI_MOSI_BT	mode0
gpio_36	E18	RXD_ACB	RXD_ACB	mode0
gpio_37	C18	NC	NC	mode0
gpio_38	Y8	F_A18	F_A18	mode0
gpio_39	H19	LCD_D8	LCD_D8	mode0
gpio_40	G12	SEC_LATCH	SEC_LATCH	mode0
gpio_41	P13	NC	NC	mode0
gpio_42	C7	I2S_WS	I2S_WS	mode0
gpio_43	W18	RXD_EXT	RXD_EXT	mode0
gpio_44	AA13	MSPM_SS	MSPM_SS	mode4
gpio_45	J20	AID_FING_ENABLE	AID_FING_ENABLE	mode5
gpio_46	J18	OVERTEMP	OVP OVERTEMP	mode5
gpio_47	V9	F_NC53	Nor flash CS	mode0
gpio_48	V12	CP_EN_SET	LED Driver CE	mode3
gpio_49	Y12	EDS_OUTPUT_ENABLE	EDS_OUTPUT_ENABLE	mode0
gpio_50	AA18	TXD_EXT	TXD_EXT	mode0
gpio_51	AA7	F_A19	F_A19	mode0
gpio_52	D12	SPI_INT_BT	SPI_INT_BT	mode4
gpio_53	B12	SECSTATUS	SECSTATUS	mode0
gpio_54	G13	MSM_NS	MC Card Detect	mode0
gpio_55	W9	F_A20	F_A20	mode0
gpio_56	B15	RXD_ACB	RXD_ACB	mode0
gpio_57	A15	BCLK_BT	BCLK_BT	mode0
gpio_58	B14	SYNC_BT	SYNC_BT	mode0
gpio_59	D13	DOUT_BT	DOUT_BT	mode0
gpio_60	W16	USB_0_RCV	USB_0_RCV	mode0
gpio_61	A19	RF_SYSCLK	RF_SYSCLK	mode0
gpio_62	AA17	USB_0_DAT	USB_0_DAT	mode0
gpio_63	W12	MISERSE	Half sensor	mode3
gpio_64	B5	VSP_VDX	VSP_VDX	mode1
gpio_65	R10	F_A21	F_A21	mode0
gpio_66	A13	SPD19	Reserved for RF(Skyworks)	mode4
gpio_67	H12	INT	INT	mode0
gpio_68	D19	RXD_EXT	RXD_EXT	mode0
gpio_69	B18	LDO_RAD_CE	LDO_RAD_CE	mode2
gpio_70	D8	I2S_SCK	I2S_SCK	mode0
gpio_71	H21	SPKR_AMP_EN	For L-Speaker Amp enable	mode5
gpio_72	V21	SPKR_AMP_EN	For R-Speaker Amp enable	mode3

Power List

Item	DC-DC or LDO	Voltage(V)	Current(mA)	Power Source	Supply Target
VR0BB	step down DC-DC	0.95-1.4/step=30	600	main battery	Core of modem processor
VRUSB	LDO	3.3	15	VRVBUS	USB module
VRLED	step up DC-DC	20	60	main battery	White Leds
VRFL	LDO	1.05,1.3 or 1.4	10	main battery	PLL
VRAB8	LDO	2.8	80	main battery	Triton Analog Part
VRRTCBRRTC	LDO	1.8	200/100	main/backup battery	32K/Power Management System
VREXTL	programmable LDO	1.8/2.8	100	main battery	external peripheral
VREXTL	programmable LDO	1.8/2.8	100	main battery	external peripheral
VRMMC	programmable LDO	1.8/2.85	100	main battery	external MMC device
VR0	LDO	1.8	200	main battery	SIM card/SIM card driver
VRMEM	LDO	1.8	200	main battery	external SRAM
VRM2	LDO	2.85	300	main battery	M2 Card
CAM_AVDD	LDO	2.8	150	main battery	Camera(backup)
N3004(Audio power)	LDO	1.8	150	main battery	Audio PA Power(backup)
N2831(Keyboard backlight driver)	Charge Pump	11	150(total)	main battery	Keyboard backlight driver

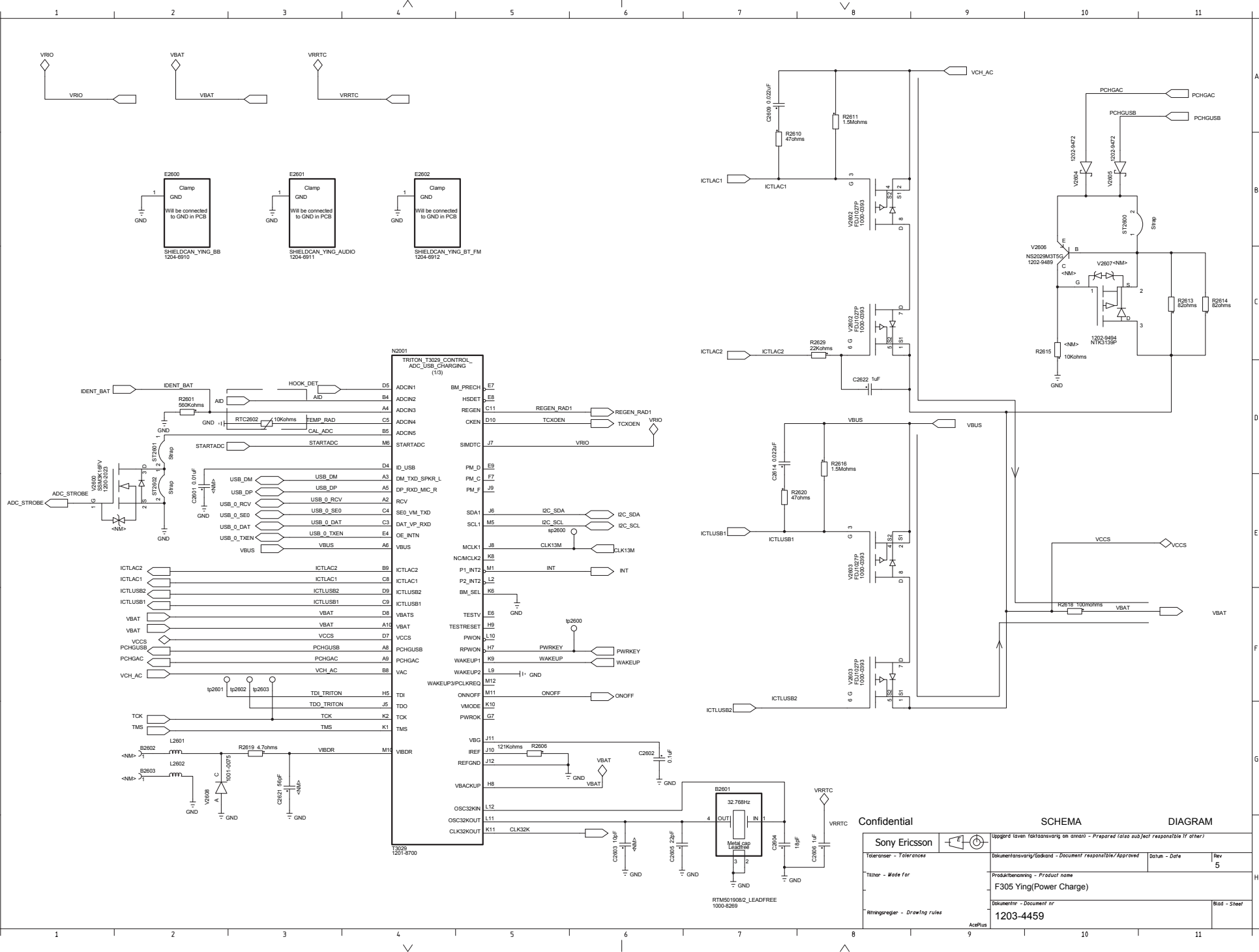
Confidential

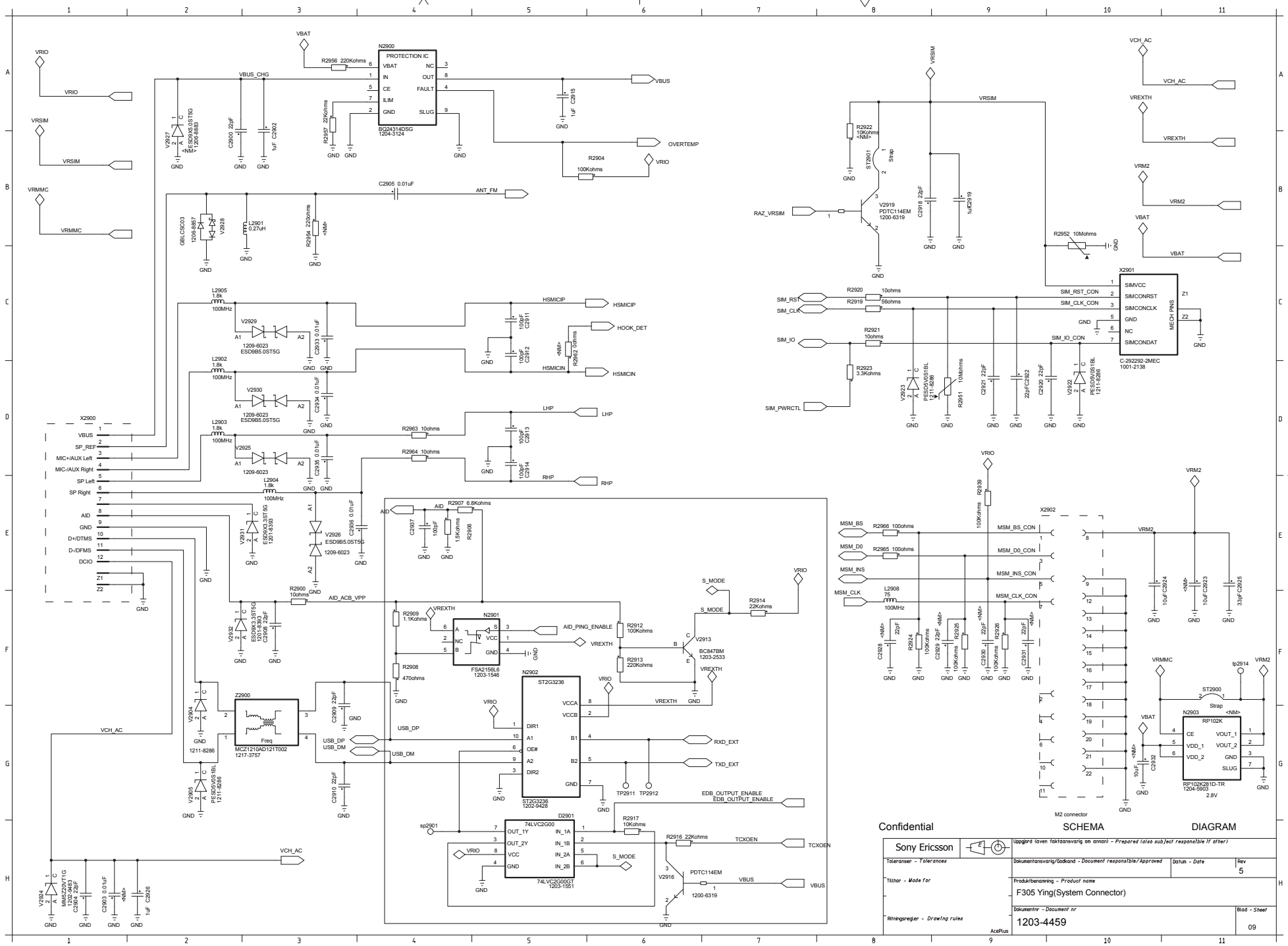
SCHEMA

DIAGRAM

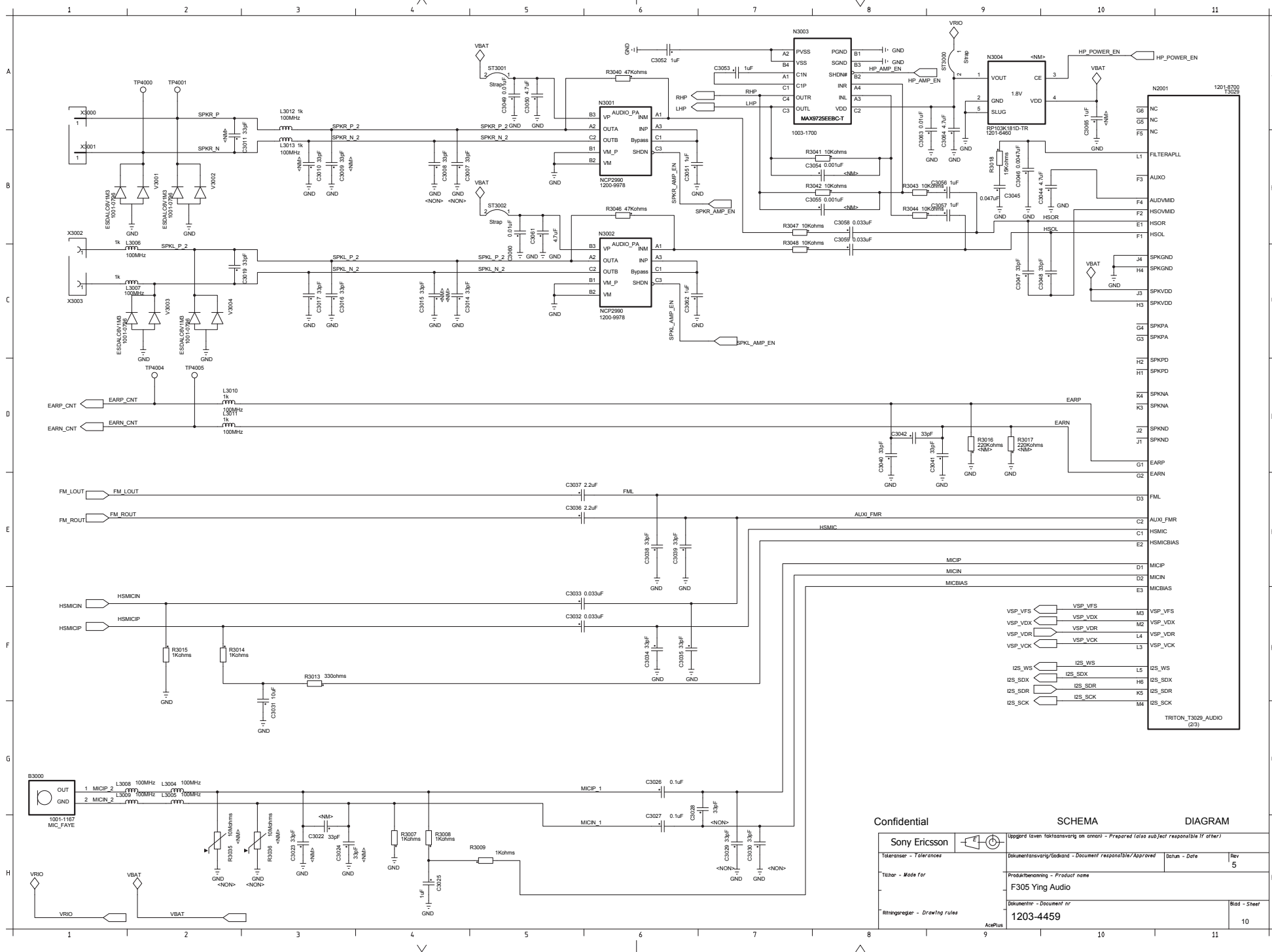
Sony Ericsson		Uppgård given faktasvaring an annan - Prepared (also sub) responsible if other	
Toleranser - Tolerances		Dokumentansvarig/öskand - Document responsible/Approved	Datum - Date Rev 5
Tillbehör - Made for		Produktnamn - Product name F305 Ying	
Ritningsregler - Drawing rules		Dokumentnr - Document nr 1203-4459	Blad - Sheet 01

AcetPlus





Confidential		SCHEMA		DIAGRAM	
Sony Ericsson		Uppgitt läsen faktasäkring på annan - Prepared (also subject responsible if other)			
Toleranser - Tolerances		Dokumentationsgödsland - Document responsible/Approved		Datum - Date	Rev 5
Tillver - Made for		Produktbenämning - Product name F305 Ying(System Connector)			
Ritningsregler - Drawing rules		Dokumentnr - Document nr 1203-4459			Blad - Sheet 09
AcerPlus					
8		9		10	
				11	



Confidential SCHEMA DIAGRAM

<div> <div>Sony Ericsson</div> <div>Toleranser - Tolerances</div> </div>		<div> <div>Uppgård ta en faktasvaring an annan - Prepared (also sub) responsible (if other)</div> <div>Dokumentansvarig/Siddand - Document responsible/Approved</div> </div>		<div> <div>Datum - Date</div> <div>Rev 5</div> </div>	
<div> <div>Tillhör - Made for</div> <div>F305 YING Audio</div> </div>		<div> <div>Produktbenämning - Product name</div> <div>F305 YING Audio</div> </div>		<div> <div>Dokumentnr - Document nr</div> <div>1203-4459</div> </div>	
<div> <div>Ritningsregler - Drawing rules</div> <div>AcePlus</div> </div>		<div> <div>Blad - Sheet</div> <div>10</div> </div>			

